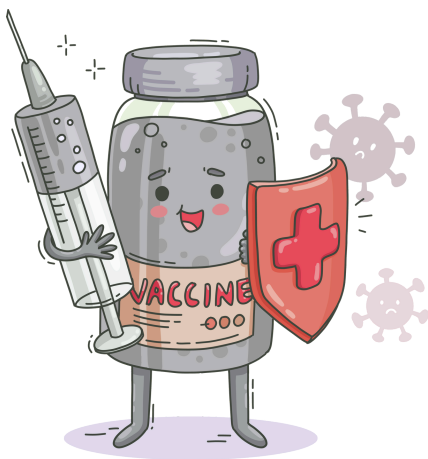


ABSOLUTE SCOOP

DID YOU KNOW?

Other respiratory virus vaccinations can be co-administered at the same time as the flu vaccine. This makes getting all the needed vaccines, in one visit, an easy task to check off the fall-readiness list.



VACCINE RECOMMENDATIONS

Written by Beth Husted, PharmD, RPh, BCMTMS, Pharmacy Director

It's that time of year again . . . back to school lists have been checked, fall activities are in full swing, and quicker than we can say **The Ohio State University**, we will be forced to have gatherings inside because of the **S-WORD**. But, before we get too far ahead of ourselves and tune out the rest of the world to focus on the **Buckeyes (O-H)**, it's important that we check at least a couple more boxes to make sure we are up to date on all the fall respiratory vaccines. Take a look at this quick overview of the most recent recommendations for Flu, COVID, Respiratory Syncytial Virus (RSV), and Pneumonia vaccines to see where you stand.

Flu

The Centers for Disease Control and Prevention (CDC) continues to recommend annual flu vaccines for everyone 6 months and older. Because there are many circulating flu viruses, the composition of the flu vaccine is reviewed and updated annually to best match what research suggests will prevent the most flu cases. For the second flu season in a row, only trivalent (three component) vaccines are available. However, there is an update to the recommendations this year; individuals 65 years of age and older should receive AND solid organ transplant recipients on immunosuppression therapy may receive a high dose or adjuvanted product. There are no specific product suggestions for any other population at this time. There are many vaccine options readily available including egg-based and cell or recombinant-based products, so finding a flu vaccine that is compatible to be used in an individual with allergies (including one to eggs) is much easier.

COVID

Updated 2025-2026 COVID vaccine recommendations have not yet been released; however, the 2025-2026 formulations are expected to be ready for fall distribution. The Food and Drug Administration (FDA) advised manufacturers that the 2025-2026 formula should be monovalent, like last year's formulation, but should use the JN.1 lineage, preferentially the LP.8.1 strain. The current 2024-2025 formulation recommendations are as follows:

- Everyone 6 months and older should receive a dose of the 2024-2025 vaccine regardless of previous vaccination status.
- People age 65 and over along with other special populations (i.e. immunocompromised) should receive a second dose of the 2024-2025 vaccine separated by 6 months, with 2 months being the minimum.

According to the FDA, the focus for this season's formulation is likely on high-risk groups including those ages 65 and older, people with underlying health conditions, or individuals residing in congregate care settings. If this focus becomes the 2025-2026 recommendation, this will mark a significant shift in the broad vaccination approach from years past.

RSV

There have been no recommendation changes to the RSV vaccine for the 2025-2026 season. The highlight for this product is that it is currently listed as only one life-time dose; duration of protection data is still being studied, but it should NOT be administered annually.



Currently, all adults 75 years of age and older or adults ages 60 to 74 who are at an increased risk of severe disease (i.e. those residing in a long-term care facility) should receive a single dose of the RSV vaccine. Any approved product, Abrysvo (Pfizer), Arexvy (GSK) or mResvia (Moderna), can be provided as a one-time intramuscular injection for this age group. Only Abrysvo can be provided to a mother during pregnancy to provide protection to an unborn baby; if utilized in this manner, the vaccination should be administered between 32 – 36 weeks.

Pneumonia

There are many products available to help protect against pneumococcal pneumonia including Pneumococcal Conjugate Vaccine (PCV15, PCV20 and PCV21) options as well as the Pneumococcal Polysaccharide Vaccine (PPSV23); with many vaccines to choose from, it can be very difficult to navigate which option is best. To help efficiently determine which pneumonia vaccine may be needed on a case-by-case basis, the CDC created an app that can be downloaded on any mobile device called ***PneumoRecs Vax Advisor***. This tool can really simplify determining which pneumococcal vaccine(s) are needed. Updated recommendations were released indicating that all adults 50 years of age or older should receive a Pneumococcal Conjugate Vaccine if they have never received or if it is unknown if they have received this product. Of note, they should receive either PCV20 or PCV21 alone or a dose of PCV15 followed by PPSV23 one year later.

Flu, COVID, and other respiratory viruses are among the leading causes of avoidable, costly hospital admissions for nursing facility residents, which is why Absolute Pharmacy is committed to making sure residents have the opportunity to receive annual and other recommended vaccines for administration this fall. By now, you should have received a **2025-2026 Vaccine Order Form**.

Absolute Pharmacy offers two options for supplying annual vaccines:

- **Bulk Program:** Absolute Pharmacy delivers vaccine to your facility to be administered by facility nurses.
- **Clinic Program:** Absolute Pharmacy will come on-site to administer vaccines to residents on a scheduled clinic date. A Customer Service Account Manager will work with you to schedule your clinic and bring the requested vaccine(s) on-site that day.

To receive more information or with questions about vaccine ordering, please contact vaccines@abshealth.com.

Now that you've scanned the vaccination list to make sure you are ready to go this fall/winter, make sure to get the needed immunizations to be up to date. Nobody wants to have to postpone any fun plans with family and friends for a respiratory virus that could have been prevented. Before we forget, there's were more thing left to do to kick off the season . . . **Go Bucks (I-O)!!**

About the Author



Outside of work, Beth enjoys spending time with her three kids and husband. You can often find her on the soccer field & basketball court, or enjoying some white wine (lol).

Beth Husted, PharmD, RPh, is the Director of Pharmacy at Absolute. She joined us in early 2019 and quickly became a respected leader and trusted advisor. She initiated our "Follow Me Home" discharge program and took on leadership of the Consultant Pharmacists and their many clinical initiatives and services. During the pandemic, Beth led our COVID-19 vaccination efforts including acquisition of the vaccine to become a Phase 1A provider - one of nine LTC pharmacies nationally! Due to her success with the COVID-19 vaccine initiative, she quickly earned an honorary Queen of COVID Award. Beth is a graduate of Ohio Northern University.

What did the receiver say to the football?

Catch ya later!



What did the football say to the punter?

I get a kick out of you!